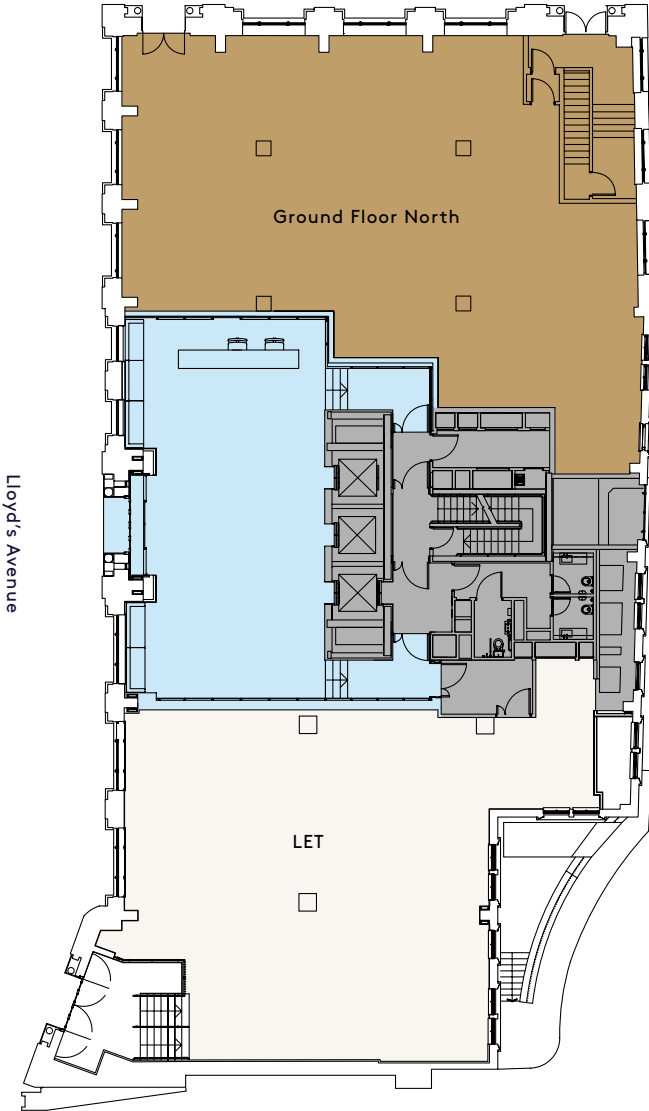


DIXON HOUSE

Ground Floor | 222 Sq m | 2,390 Sq ft

Fenchurch Street



● Office ● Core ● Reception



All plans are for indicative purposes only and are not to scale.

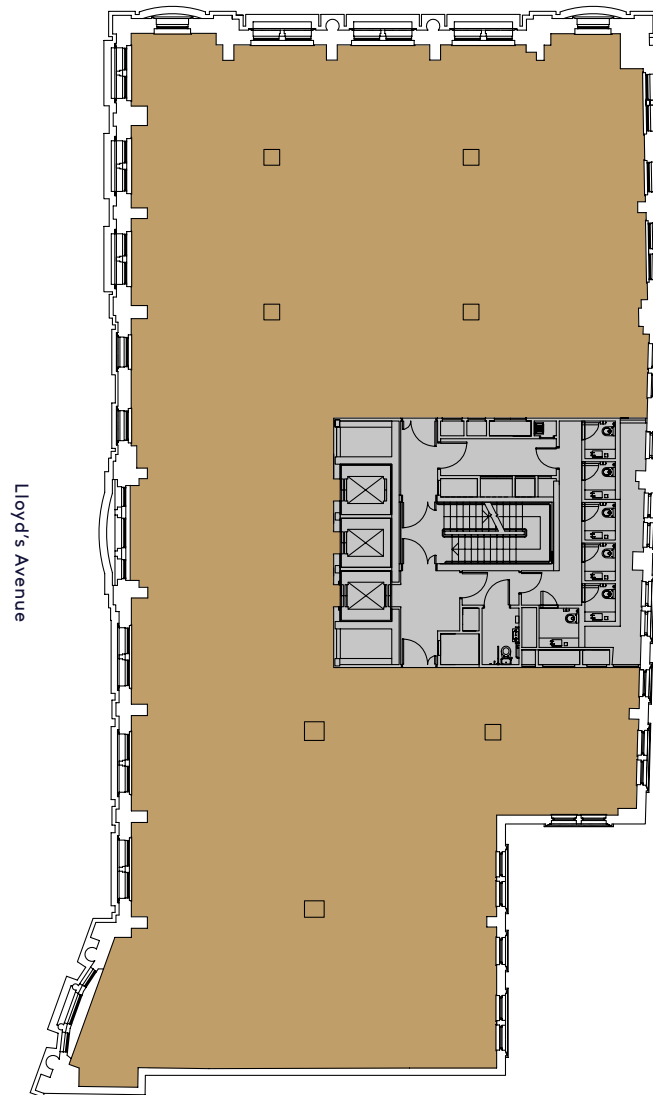
DIXON HOUSE

Second Floor

683 Sq m

7,347 Sq ft

Fenchurch Street



Lloyd's Avenue

● Office ● Core



All plans are for indicative purposes only and are not to scale.

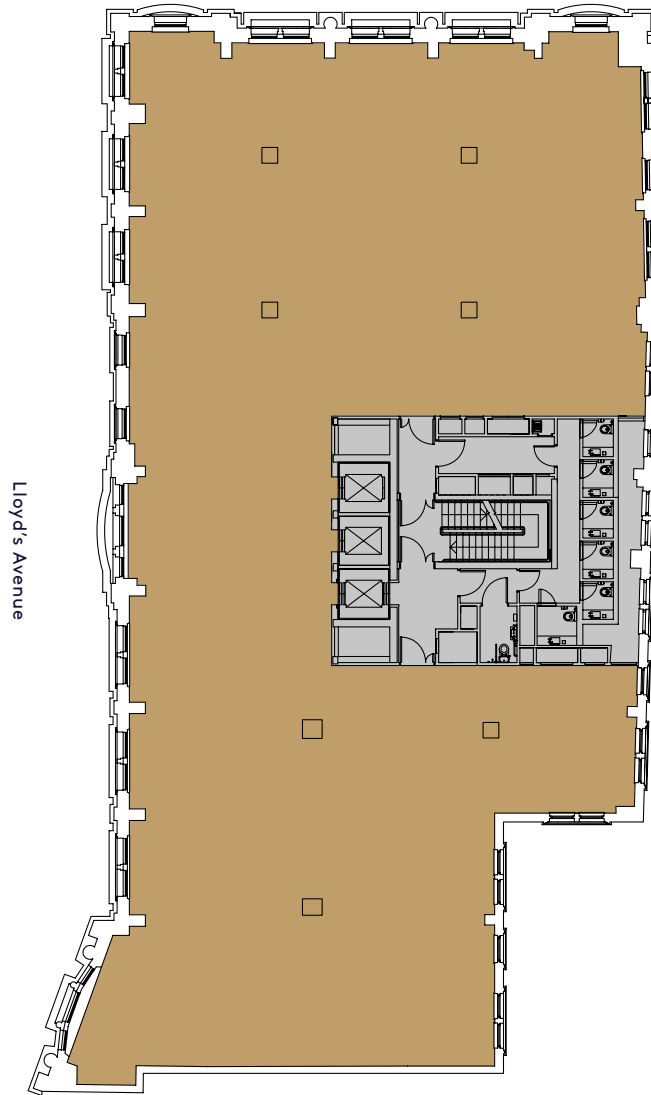
DIXON HOUSE

Third Floor

675 Sq m

7,260 Sq ft

Fenchurch Street



Lloyd's Avenue

● Office ● Core



All plans are for indicative purposes only and are not to scale.

DIXON HOUSE

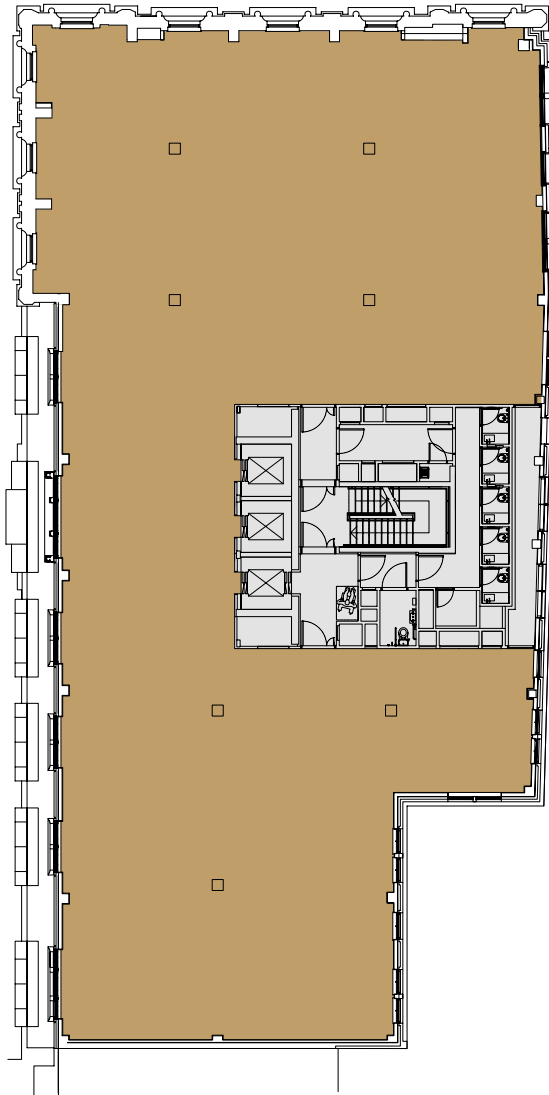
Fourth Floor

644 Sq m

6,937 Sq ft

Fenchurch Street

Lloyd's Avenue



● Office ● Core



All plans are for indicative purposes only and are not to scale.

DIXON HOUSE

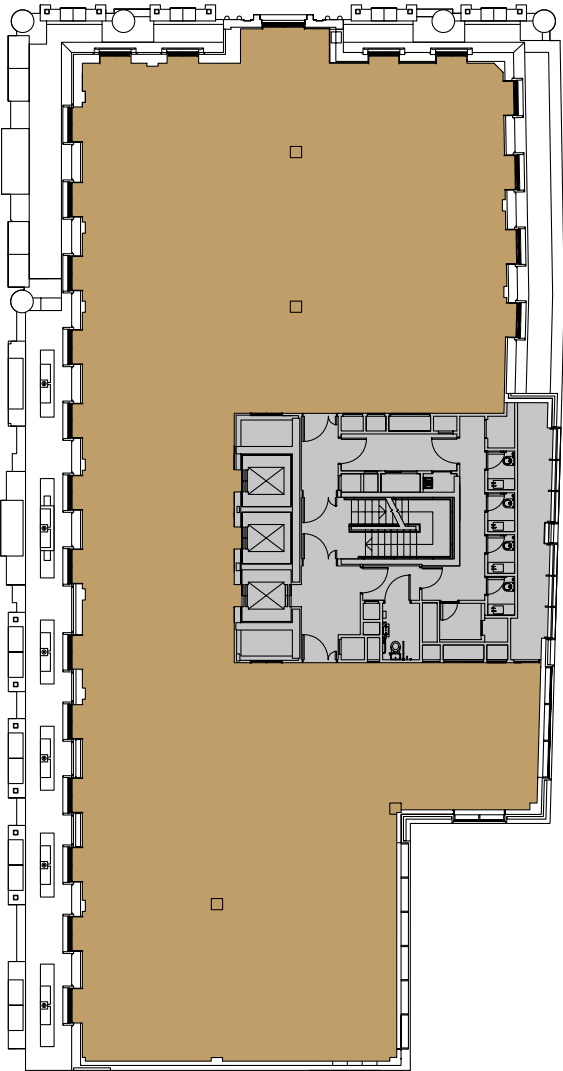
Fifth Floor

574 Sq m

6,180 Sq ft

Fenchurch Street

Lloyd's Avenue



● Office ● Core



All plans are for indicative purposes only and are not to scale.

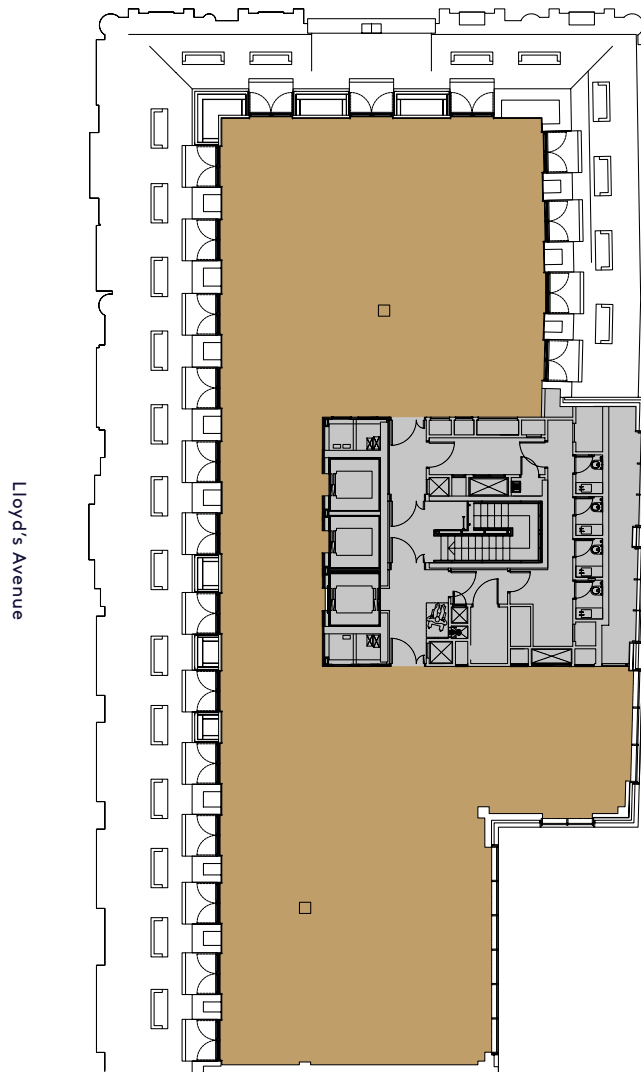
DIXON HOUSE

Sixth Floor

410 Sq m

4,409 Sq ft

Fenchurch Street



● Office ● Core



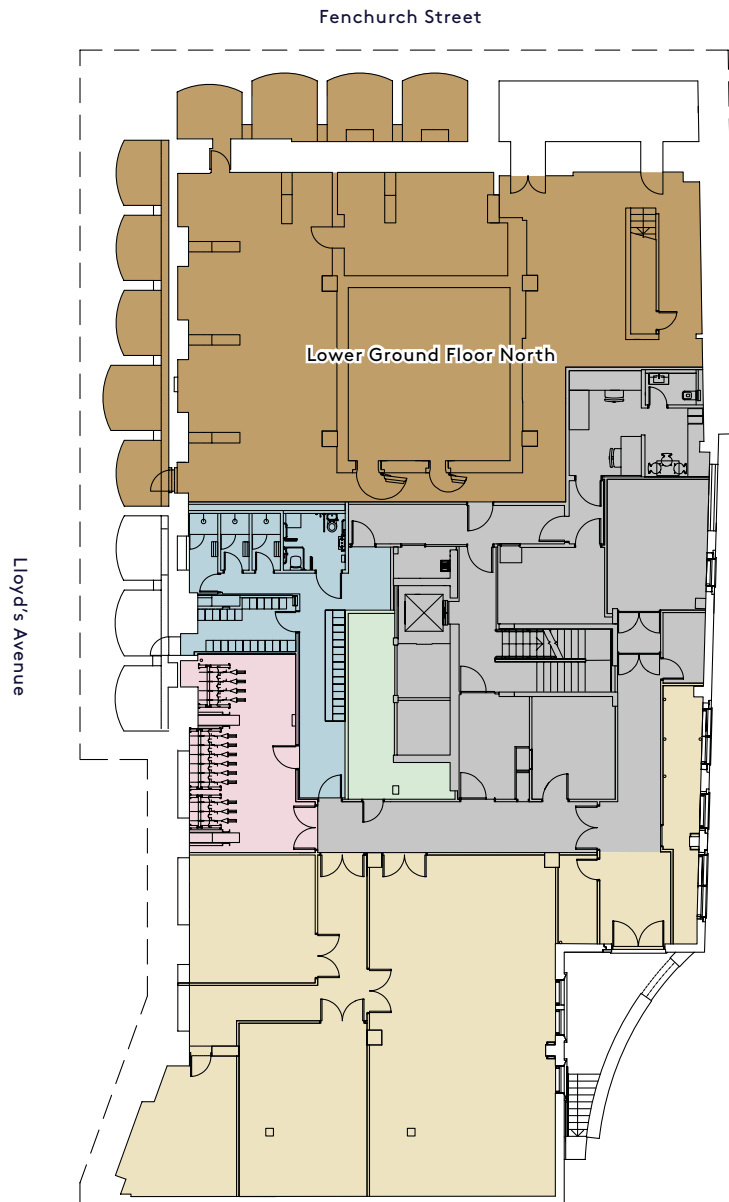
All plans are for indicative purposes only and are not to scale.

DIXON HOUSE

Lower Ground Floor

284 Sq m

3,056 Sq ft



● Office ● Core ● Storage ● Showers ● Cycle Storage ● Plant



All plans are for indicative purposes only and are not to scale.